

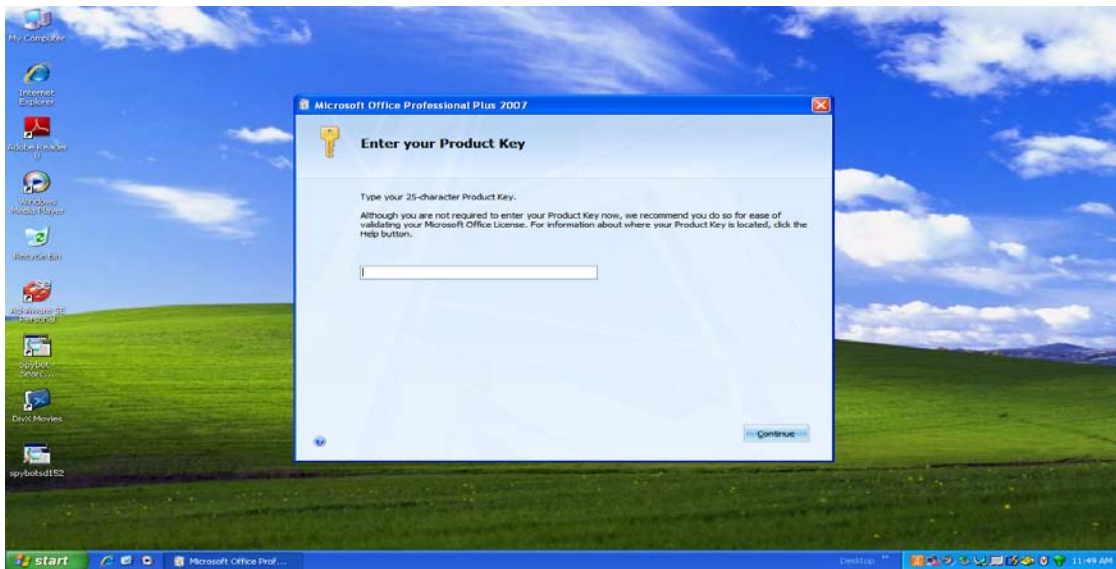
Installing Microsoft Office 2010

Step 1:

Insert CD.

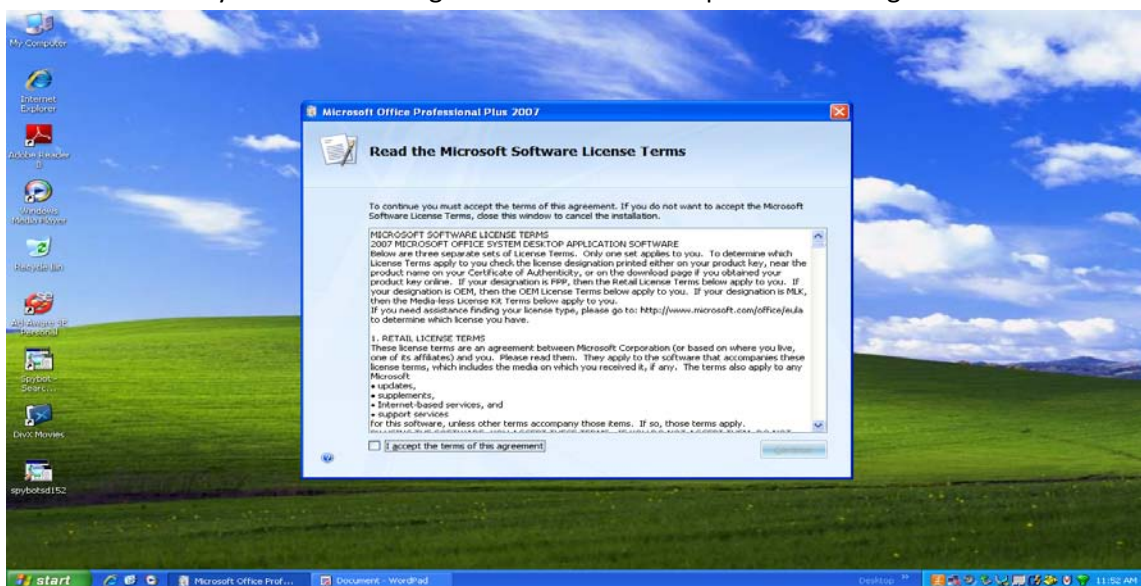
Step 2:

Enter the Product Key. Usually found on the back of the CD packet.



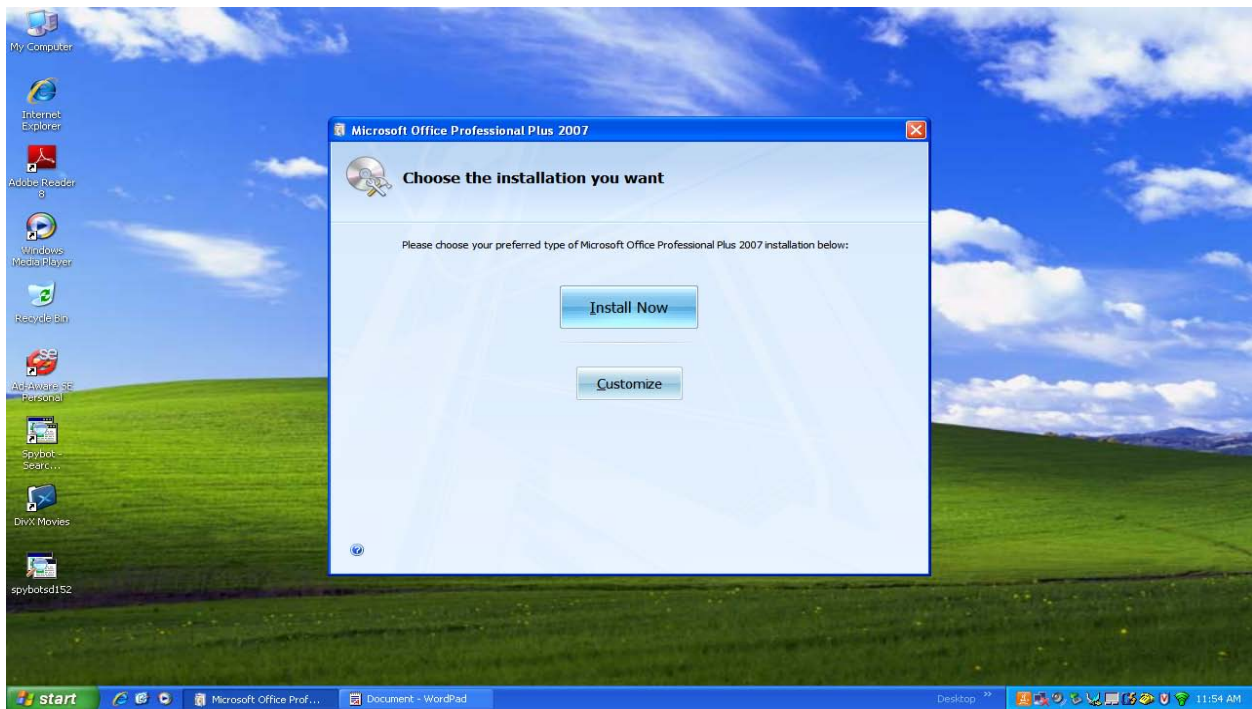
Step 3:

Enter your name and organization. Then accept the license agreement.



Step 4:

Click on “Install Now” to begin the software installation.



Step 5:

If you have an internet connection, click on “Go to Office Online” to obtain updates.

