

Creating a Windows Password

Because the University of Tennessee has no firewalls for protection from hackers it is **STRONGLY RECOMMENDED** that your computer require you to login with a Windows password. The steps below will guide you through the password creation process.

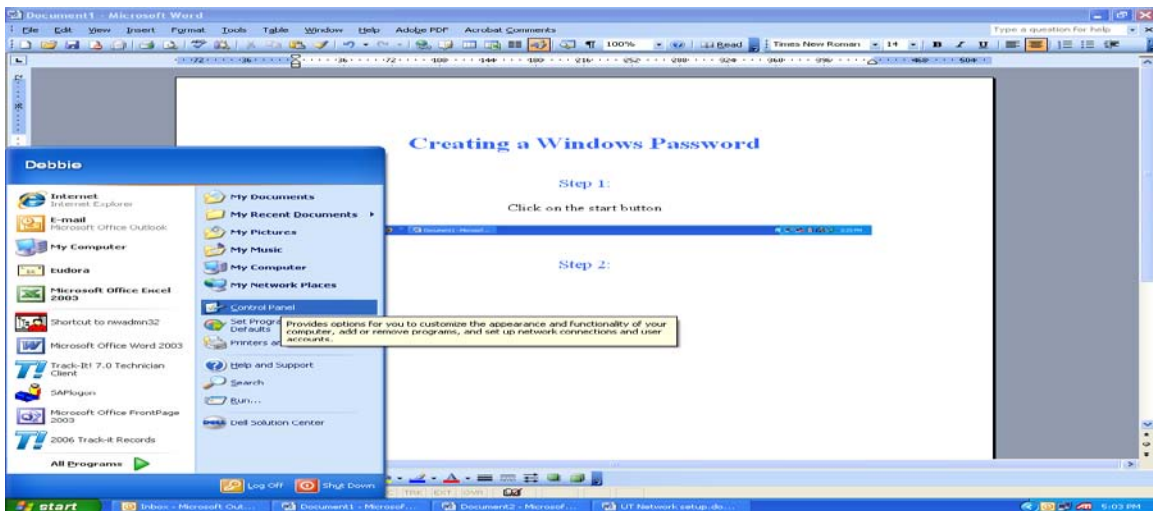
Step 1:

Click on the start button



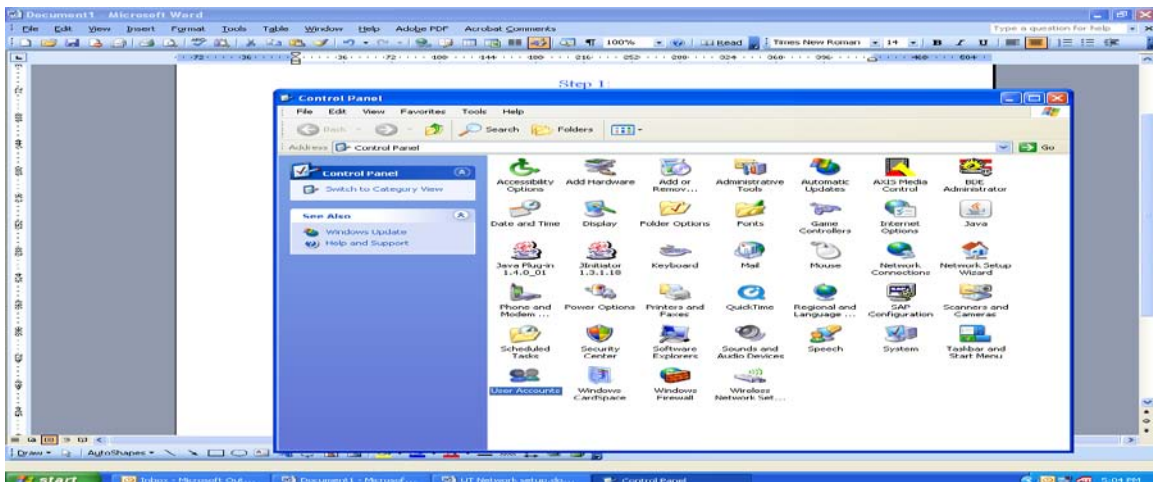
Step 2:

Click on control panel



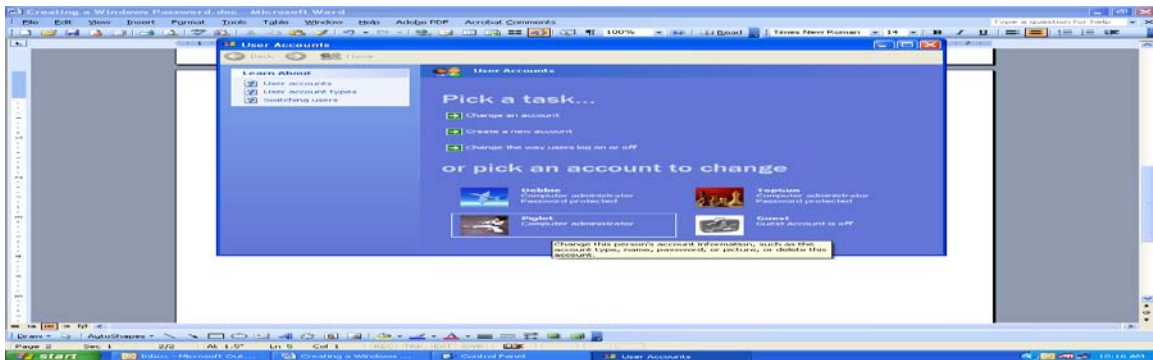
Step 3:

Click on User Accounts



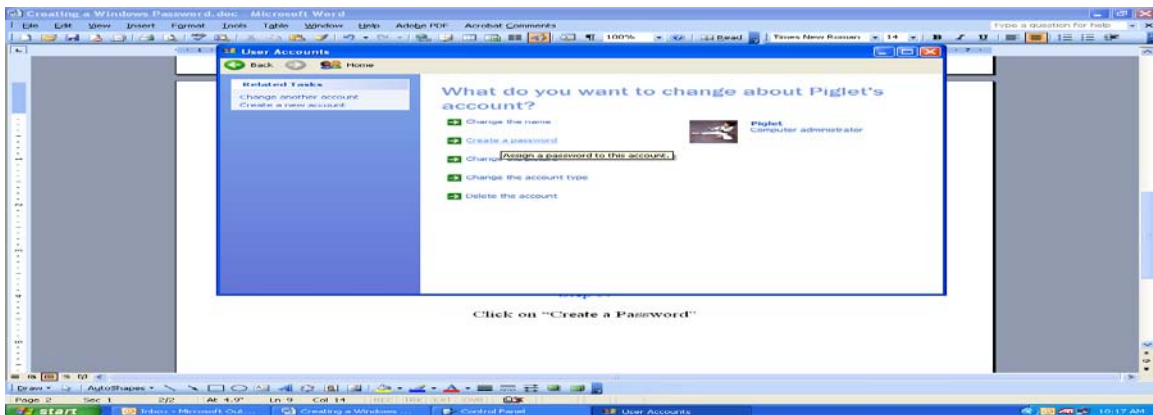
Step 4:

Click on the User Account icon that you use to login to your computer with.



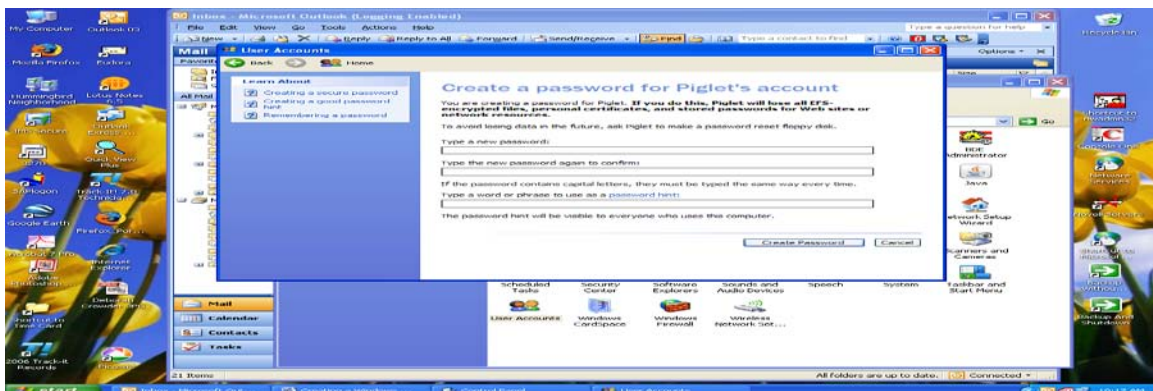
Step 5:

Click on "Create a Password"



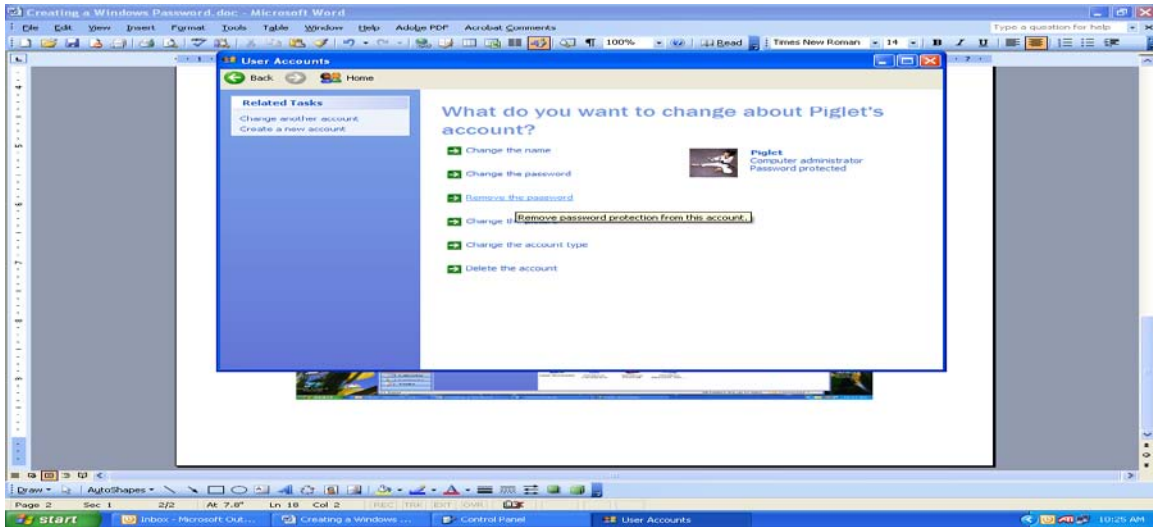
Step 6:

Type in a password, repeat the password, type in a password hint if you wish and then click on the Create Password button (be sure to write this info on your checklist until you become accustomed to using it).



Step 7:

Confirm that the account now says that it is Password Protected.



If Password Protected is now shown under the account name, you may close this window. When you reboot your computer you should now be required to enter a password to login to your computer.